

THE LAST JUDGEMENT - Verdi and Michelangelo

A show by Paolo Micciché

Technical rider

Requested equipment

- + Front projection: HD video projector 35000 ANSI lumens, including steady ground support.
- + Soundproof air conditioned booth to host front video projector and operators.
- + Grey Gobelin front scrim (size TBA)
- + Rear projection: HD video projector 20000 ANSI lumens, including steady scaffolding support.
- + Rear projection grey PVC backdrop (size TBA)
- + Intercom sets as needed
- + Black velour legs and borders
- + Lighting system (lighting units, cables and control system)
- + Four black cubes, including cushions, to be placed downstage as soloists seats
- + Four soloists costumes (light colored tunics)
- + Costumes for all chorus members (light colors simple tunics)
- + Standard platforms for the chorus, placed between scrim and PVC backdrop (size TBD)
- + Orchestra music stands with cold white dimmable LED lights

Crew as needed

- + Including qualified stage hands, lighting board operator and lighting crew, costumes mistresses, orchestra crew and a video technician specifically trained for the video projectors and the video hardware of the show.

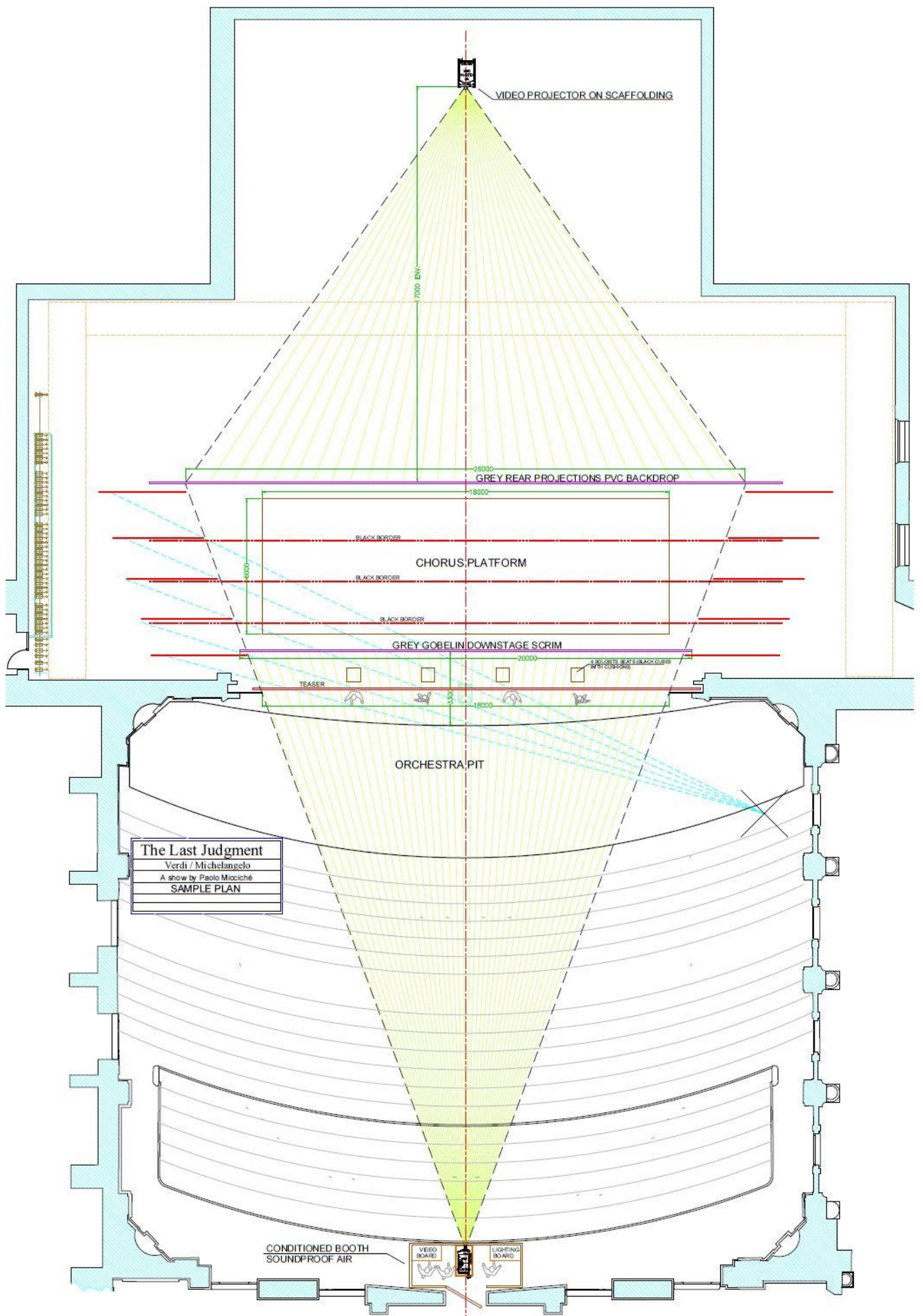
Please note

- + Soloists and Chorus must know the piece by heart
- + Extra trumpets to play outside of the Orchestra pit (2+2 somewhere in the House)

Staging and design team traveling to the cities presenting the show

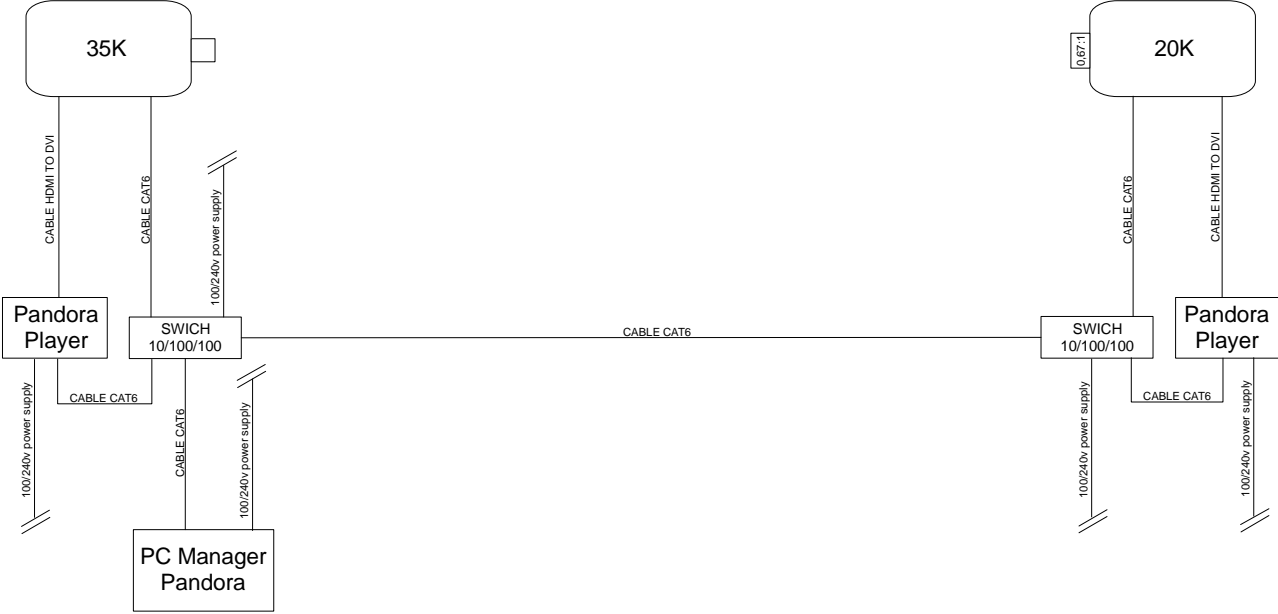
- + Director
- + Projections designer and manager
- + Lighting designer/Production coordinator
- + Director's assistant/Show caller(calling lights and projections cues from the front)
- + Costume designer/coordinator

Pre-encoded video control system (Pandora's Box media servers) provided by the design team.



The Last Judgment
 Verdi / Michelangelo
 A show by Paolo Micciché
 SAMPLE PLAN

Projection Technical Scheme



Material provided by design team

- N°2 Pandora Player V6
- N°2 Switches 10/100/1000
- N°1 Pandora Manager V6

All the projectors, the soundproofing of the projectors and the wiring (as per the diagram) must be supplied, installed and managed by the production.

With the new laser projectors, we have almost completely solved the noise problem.